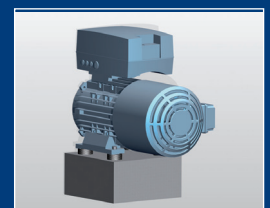


Metal Cushions

WG - GI Machine mount type with thread



ONLINE
Calculation and
2D / 3D CAD Download



Benefits

Applications:

- Building industry
- Industrial and large- scale plants
- Railsystems

Material:

- Stainless steel (Cr Ni - steel wire Nr. 1.4301)

Temperature:

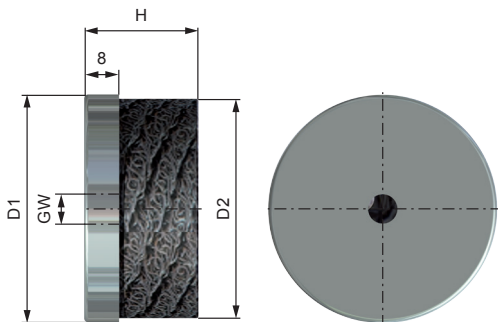
- Standard: -90°C - +400°C

Damping:

- Shock-absorbing and vibration-isolation

Extended life cycle :

- Corrosion-resistant against solvents, acids, oils, greases, liquids and dust
- Resistant to age
- no permanent deformation, no hardening and no creeping



TECHNICAL DATA

	D1	H	D2	GW	Load	Natural frequency (Hz)	Static deflection	Weight
	mm	mm	mm	mm	kN (max.)	Hz	mm	g
WG-GI 28x17,5	28	17,5	23,6	M6	0,6	15 - 20	4,2	20
WG-GI 40x17	40	17,0	34,5	M6	1,0	15 - 20	4,8	40
WG-GI 45x22	45	22,0	40,0	M8	1,5	15 - 20	5,6	60
WG-GI 58x22	58	22,0	53,6	M8	2,25	15 - 20	6,3	100

