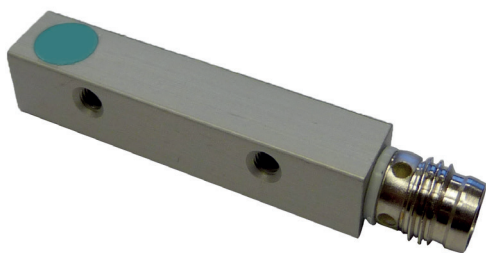
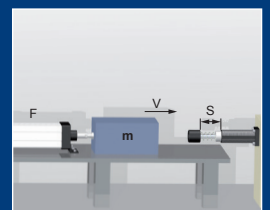


## Proximity switch

N31



**ONLINE**  
Calculation and  
2D / 3D CAD Download



## TECHNICAL DATA

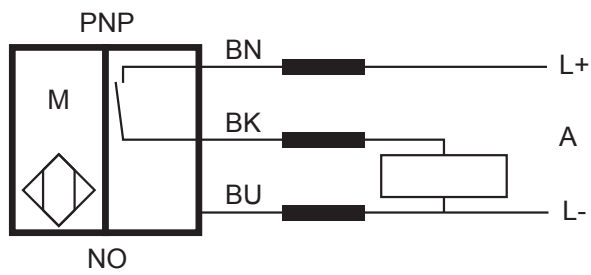
### Inductive proximity switch

Order-No. **N31**

output	PNP-No
rated operating distance $S_n$ /mounting	1,5 mm / flush
assured operating distance $S_a$	$\leq 1,2$ mm
real switching distance $S_r$ /standard target $St37$	1,35 - 1,65 mm
reduction factors, dependent on alloy	$M_s$ 0,45 x $S_n$ / Al 0,4 x $S_n$ / Cu 0,3 x $S_n$
repeat accuracy R	$\leq 0,1$ x $S_r$
differential travel H	1 - 20%
supply voltage $U_B$	10 - 30V DC
no-load supply current $I_o$	$\leq 10$ mA
rated operational current $I_e$	max. 150 mA
voltage drop $U_d$	$\leq 3,5$ V at $I_e = 150$ mA
switching frequency f	max. 2000Hz
operating temperature range	-25°C - +70°C
short circuit protection/ at current	clocking /min. 180 mA
norm conformity / EMC	EN 60947-5-2
reverse polarity protection	<input checked="" type="checkbox"/>
dielectric test voltage ac (rms.) $U_i$	500 V
degree of protection acc, to DIN 60 529	IP67
on/off indication	LED
connection	plug with thread M8x1 (fixing torque of plug < 0,6 Nm)
housing material	aluminium
fixing torque	max. --- Nm



## CIRCUIT DIAGRAM



## DIMENSIONS

